



**Preview
Display**

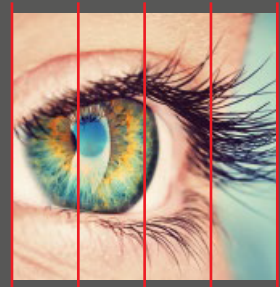
Artwork Specification

Setting up artwork files for large format output

1. DOCUMENT SIZE

Use our templates to ensure your work is set up at the correct scale. These will be at 25% scale (quarter sized) or at 100% of the scale of the graphic.

Our templates are created to account for multi panel displays.
DO NOT SPLIT ARTWORK INTO SECTIONS.



2. BLEED

When creating artwork for our standard size products, please refer to our Adobe Illustrator artwork templates for reference, or to create your designs.

For bespoke enquiries, just let us know and we can create a template for you if necessary.



3. FILE FORMAT

The preferred file format is an editable PDF file. Save in High Quality Print Format, without compression & don't downsample images. Outline all fonts. Crop marks aren't required.

4. RESOLUTION

If your artwork includes images please ensure that they are 75ppi. If your artwork is scaled (e.g. 25%) keep all images at 300ppi. Low resolution images will result in pixelation.

5. TRANSFER

Supply all print ready PDFs to Preview Display Using the MailBigFile prompt on your order confirmation email.

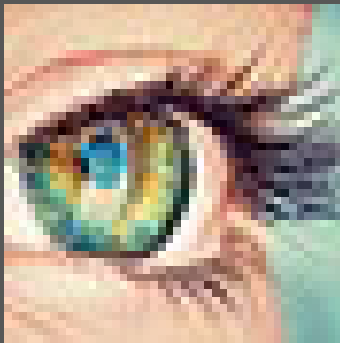
Please note: We cannot be held responsible for any inaccuracies resulting in failure to follow these guidelines. Please contact us if you require any clarification or have any queries regarding supplying your artwork to us.



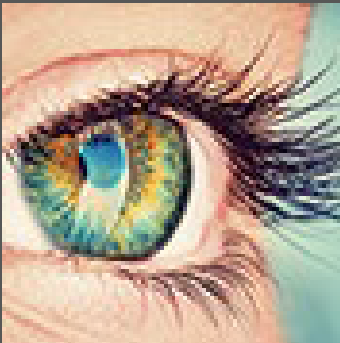
**Preview
Display**

Artwork Specification

Image Resolution - Comparing PPI



25 pixels per inch
= 1 pixel @ 1mm



100 pixels per inch
= 1 pixel @ 0.25mm



75 pixels per inch
= 1 pixel @ 0.33mm



50 pixels per inch
= 1 pixel @ 0.5mm

Suggestion:

Place a print out of this page on a wall and view at required distance.



**Preview
Display**

Artwork Specification

Checking image size in Adobe Photoshop

On large format printing the artwork files we receive can be **25% actual print** size but the images you use must still be **300ppi** (pixels per inch). This ensures all printed images look sharp and crisp not pixelated or fuzzy.

You can check your images will be a high enough resolution using Adobe Photoshop.

1. OPEN THE FILE

Open the file in Adobe Photoshop.

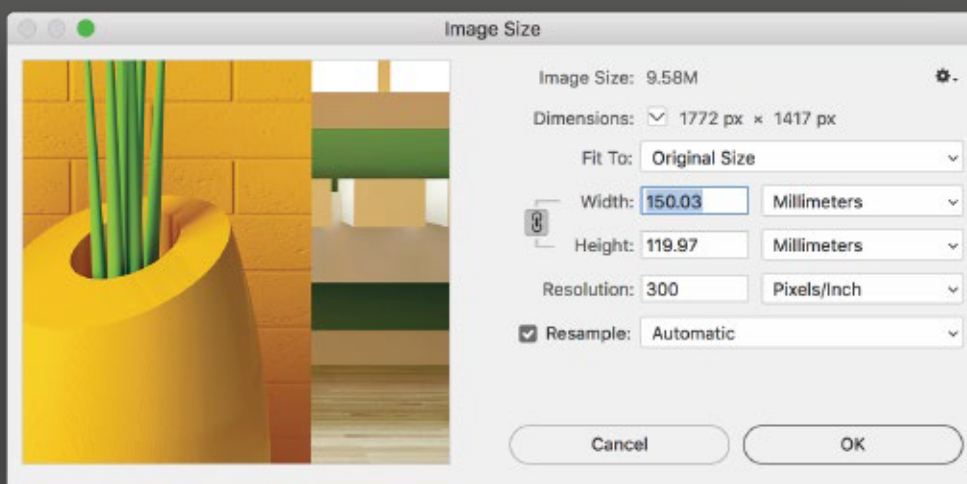
2. SELECT IMAGE SIZE

From the application menu select **Image / Image size...** The dialog box below will open. Ideally your file **Width** and **Height** will be big enough to use in your artwork file and the **Resolution** will be at least 300 Pixels/Inch

IF THE IMAGE IS TOO SMALL

You can **Resample** images by increasing the Width and Height. Note that image's appearance and print quality will diminish the more it is increased in size this way.

If the image is too small or its Resolution is too low the best solution is to reduce the image in size on the artwork file or source a higher resolution replacement.





**Preview
Display**

Artwork Specification

Exporting your artwork to PDF High Quality Print Format

To ensure your files are printed smoothly and accurately we ask that all artwork files are supplied in as PDFs in the [High Quality Print] Format.

1. 'SAVE AS' (OR 'EXPORT')

Go to File / Save as (or Export, depending on which application you're using) and select Adobe PDF from the Format drop down menu.

2. SELECT HIGH QUALITY PRINT

Click on the Adobe PDF Preset and select [High Quality Print].

3. CHECK THROUGH SETTINGS

Settings shouldn't need to be changed but check they match your print requirements. Also check for any pre-flight alerts under the Summary section.

4. SELECT 'SAVE PDF'

